

Statistics to accompany article posted on Honest History site 2 February 2016 (working tables in italics)

Figure 1: Visitors to Australian War Memorial 1991-2015, total and Australian-based (year ending 30 June)

| 1991 | 1992 | 1993 | 1994 | 1995 | 1996 | 1997 | 1998 | 1999 | 2000 | 2001 | 2002 | 2003 |
|--------|--------|--------|---------|---------|--------|--------|--------|--------|--------|--------|--------|--------|
| 750000 | 800000 | 827327 | 1015781 | 1019279 | 877680 | 800790 | 802950 | 814850 | 868600 | 892017 | 933200 | 794020 |
| 697500 | 744000 | 769414 | 944676 | 947929 | 816242 | 744735 | 746743 | 757810 | 807798 | 829576 | 867876 | 738439 |

Data: Australian War Memorial Annual Reports; Australian War Memorial advice on proportion of visitors not Australian-based (7 per cent annually)

Non Australian-based visitors to Australian War Memorial at notional 7 per cent 1991-2015 (year ending 30 June)

| 1991 | 1992 | 1993 | 1994 | 1995 | 1996 | 1997 | 1998 | 1999 | 2000 | 2001 | 2002 | 2003 |
|-------|-------|-------|-------|-------|-------|-------|-------|-------|-------|-------|-------|-------|
| 52500 | 56000 | 57913 | 71105 | 71350 | 61438 | 56055 | 56207 | 57040 | 60802 | 62441 | 65324 | 55581 |

Data: Australian War Memorial advice on proportion of visitors not Australian-based (7 per cent annually)

Figure 2: Visitors to A.C.T. 1999-2015, domestic overnight and domestic day (year ending 30 September) [Series 1]; Australian-based visitors to Australian War Memorial 1991-2015 (year ending 30 June)

| 1999 | 2000 | 2001 | 2002 | 2003 | 2004 | 2005 | 2006 | 2007 | 2008 | 2009 | 2010 | 2011 |
|---------|---------|---------|---------|---------|---------|---------|---------|---------|---------|---------|---------|---------|
| 3646000 | 4298000 | 3756000 | 4005000 | 3983000 | 3512000 | 3577000 | 3223000 | 3684000 | 3359000 | 3193000 | 3781000 | 3452000 |
| 757810 | 807798 | 829576 | 867876 | 738439 | 786775 | 682597 | 737802 | 785576 | 812399 | 750571 | 815610 | 771900 |

Data: Tourism Research Australia; VisitCanberra; Australian War Memorial Annual Reports; Australian War Memorial advice on proportion of visitors not Australian-based (7 per cent annually)

Figure 3: Australian population 1991-2015 (estimates; June quarter)

| 1991 | 1992 | 1993 | 1994 | 1995 | 1996 | 1997 | 1998 | 1999 | 2000 | 2001 | 2002 | 2003 |
|----------|----------|----------|----------|----------|----------|----------|----------|----------|----------|----------|----------|----------|
| 17335900 | 17529000 | 17661500 | 17843300 | 18054000 | 18289100 | 18532200 | 18751000 | 18966800 | 19157000 | 19386700 | 19707200 | 19881500 |

Data: Australian Bureau of Statistics, 3101.0 - Australian Demographic Statistics (later years are preliminary estimates)

Figure 4: Australian-based visitors to Australian War Memorial as proportion of Australian population 1991-2015 (year ending 30 June)

| 1991 | 1992 | 1993 | 1994 | 1995 | 1996 | 1997 | 1998 | 1999 | 2000 | 2001 | 2002 | 2003 |
|-------|-------|-------|-------|-------|-------|-------|-------|-------|-------|-------|-------|-------|
| 4.02% | 4.24% | 4.36% | 5.29% | 5.25% | 4.46% | 4.02% | 3.98% | 4.00% | 4.22% | 4.28% | 4.40% | 3.71% |

Figure 5: Student visitors to Australian War Memorial 2006-15 (rounded; year ending 30 June)

| 2006 | 2007 | 2008 | 2009 | 2010 | 2011 | 2012 | 2013 | 2014 | 2015 |
|--------|--------|--------|--------|--------|--------|--------|--------|--------|--------|
| 110000 | 118000 | 119000 | 123000 | 125000 | 126000 | 129000 | 127000 | 125000 | 140000 |

Data: Australian War Memorial Annual Reports

Av. 124200

Visits to Australian War Memorial website 2009-15 (year ending 30 June)

| 2009 | 2010 | 2011 | 2012 | 2013 | 2014 | 2015 |
|---------|---------|---------|---------|---------|---------|---------|
| 2800000 | 2995923 | 3112804 | 3697800 | 4167436 | 4994686 | 7376838 |

Data: Australian War Memorial Annual Reports; no figures pre 2009 due problems with inflated statistics: Annual Report 2009, page 14

First visits' to Australian War Memorial 2010-15 (year ending 30 June)

| 2010 | 2011 | 2012 | 2013 | 2014 | 2015 |
|--------|--------|--------|--------|--------|--------|
| 307000 | 267000 | 275500 | 286376 | 320414 | 336698 |

Data: Australian War Memorial Annual Reports

Figure 1: Visitors to Australian War Memorial 1991-2015, total (Series 1) and Australian-based (Series 2) (year ending 30 June)

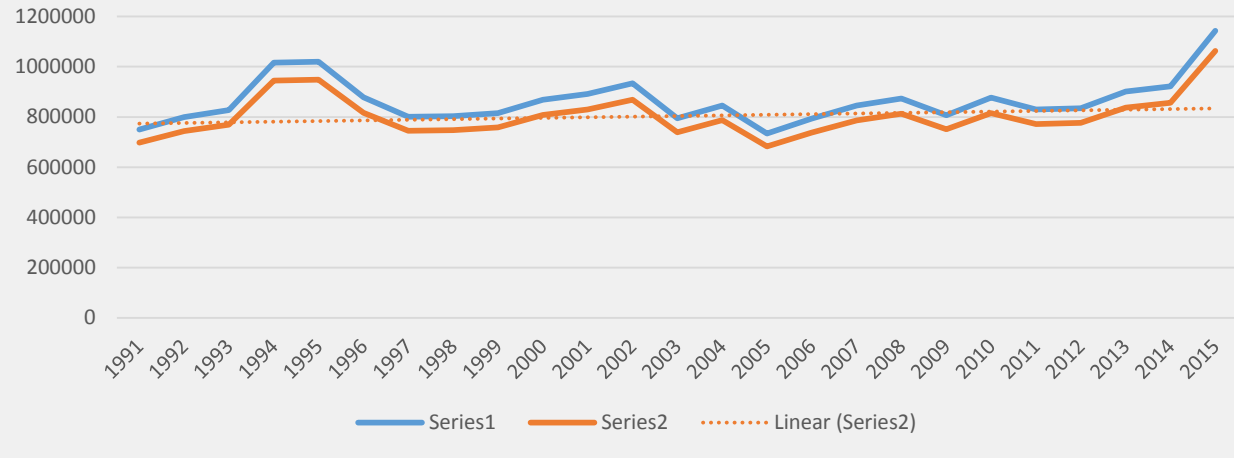


Figure 2: Visitors to A.C.T. 1999-2015, domestic overnight and domestic day (year ending 30 September) [Series 1, left Y axis]; Australian-based visitors to Australian War Memorial 1999-2015 (year ending 30 June) [Series 2, right Y axis]

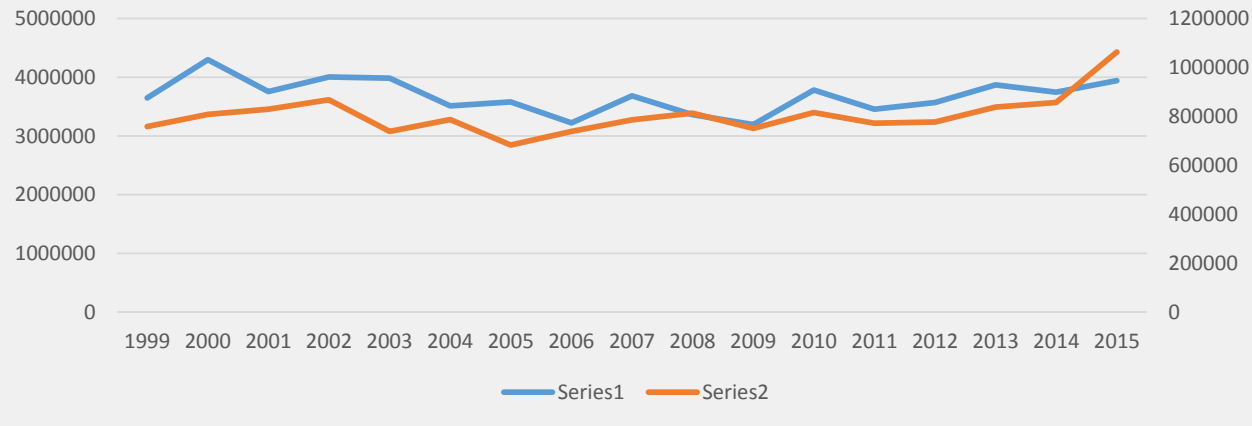


Figure 3: Australian population 1991-2015 (estimates; June quarter)

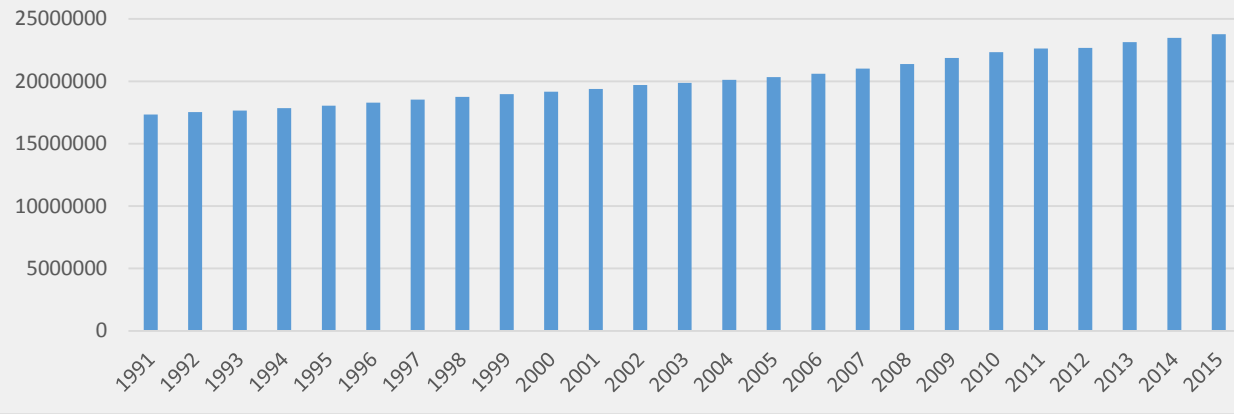


Figure 4: Australian-based visitors to Australian War Memorial as proportion of Australian population 1991-2015 (year ending 30 June)

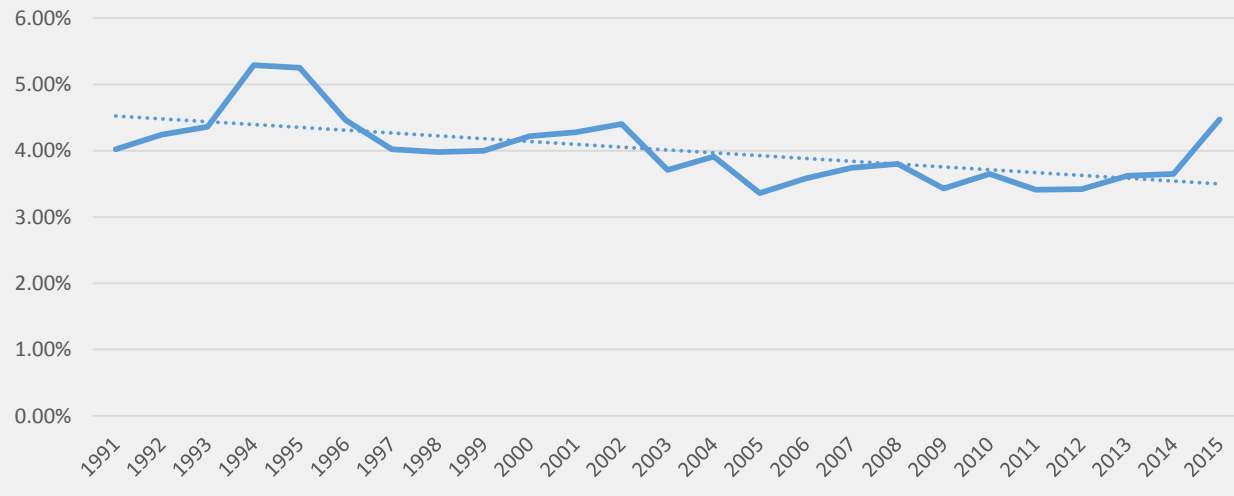


Figure 5: Student visitors to Australian War Memorial 2006-15
(rounded; year ending 30 June)

